

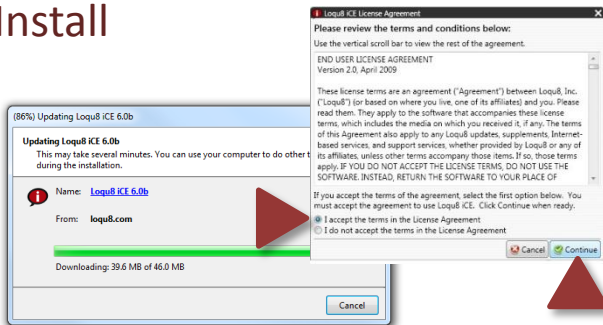
## Download



Download Loqu8 iCE 6 from:

<http://www.loqu8.com/download/ice6/ice6setup.exe>

## Install



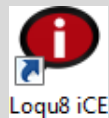
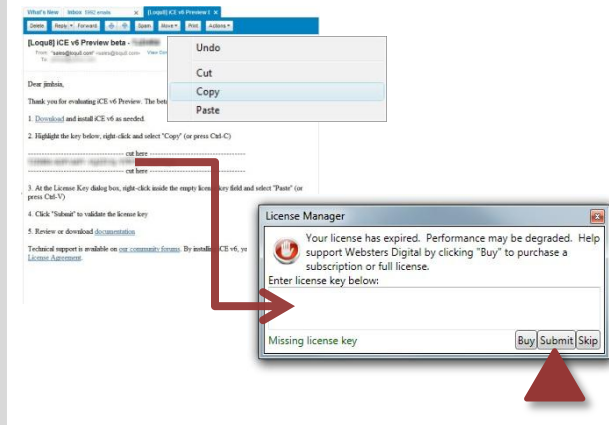
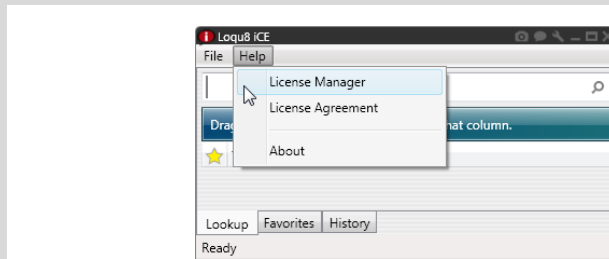
Click **Install** and follow the on-screen instructions. Restart computer after installation is completed.

### System Requirements

- Microsoft Windows 7, Vista, XP or Server 2008
- Microsoft .NET 3.5\*
- AR PL New Sung font with both traditional and simplified characters (recommended\*)

\* **TIP:** Get these free downloads from <http://www.loqu8.com/download.htm>

## Activate



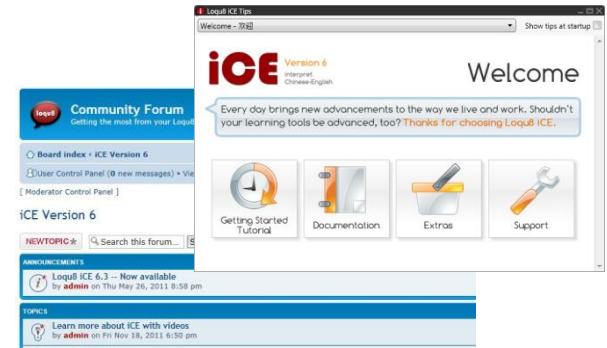
Start Loqu8 iCE by double-clicking the **Loqu8 iCE** program icon on your desktop

To activate your software:

1. From the iCE main window, choose **Help > License Manager**
2. Inside the License Manager dialog box, enter your license key. **TIP: copy and paste the 44-character key from your email.**
3. Click **Submit**. In about a minute, your license will be activated. Click **Continue**.

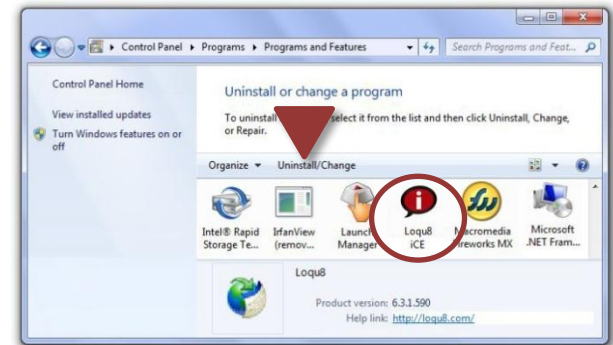
Purchase a license from: <http://www.loqu8.com/buy/>

## Welcome



The iCE Welcome screen directs you to the Getting Started video tutorial, documentation and extras. Click support or visit <http://forums.loqu8.com> to find tips, answers to frequently asked questions (FAQ), public forums and more. iCE is supported by Loqu8 and a community of users.

## Uninstall



To uninstall Loqu8 iCE:

1. In Control Panel, select **Uninstall a program**.
2. Select **Loqu8 iCE** and click **Uninstall**.
3. Choose **Remove the application from this computer**.
4. Click **OK**.