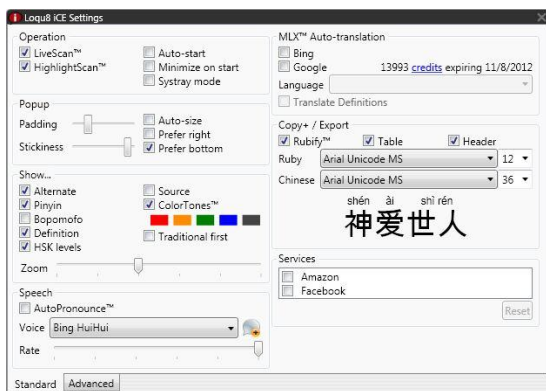


Settings



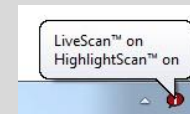
Click the *Settings* icon to change iCE's settings for general, display, speech and Copy⁺/Export preferences.



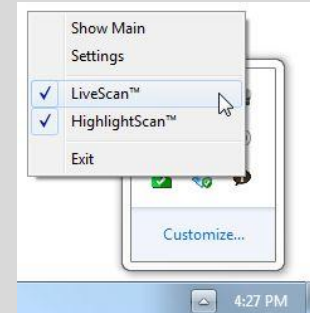
Click the **X** (top right corner) to close this dialog box.

Operation

- **LiveScan™**: Hover your mouse over Chinese text and iCE opens a pop-up window. Un-check to disable this function.
- **HighlightScan™**: Highlight a range of text for iCE. Un-check to disable this function.
- **Auto-start**: Check to enable iCE to launch automatically when your computer starts up.
- **Minimize on start**: Hide main window on start-up.
- **Systray mode**: Hide all windows until Chinese is detected. For compatibility with older versions.



Toggle LiveScan on/off by clicking the Loqu8 icon in the top left of any iCE window or system tray icon. Right-click to view options.



In systray mode, right-click the Loqu8 iCE icon to view windows and option.

Popup

- **Padding**: Distance from mouse pointer to popup windows (LiveScan, HighlightScan) .
- **Stickiness**: Greater value makes it easier to click and take actions in the popup windows, but slows responsiveness when moving word to word.
- **Auto-size**: Let iCE automatically size the LiveScan and HighlightScan windows according to content.
- **New! Prefer right or bottom**: LiveScan's and HighlightScan's default window position is the upper left position of your mouse cursor. Check right or bottom to position windows differently.

Show

- **New! Alternate**: when hovering over simplified Chinese, shows traditional Chinese (or vice versa).
- **Pinyin**: most popular phonetic for learning Chinese.
- **Bopomofo**: phonetic common in Taiwan.
- **New! Definition**: meaning of word(s)
- **New! HSK**: Chinese proficiency for the Hanyu Shuiping Kaoshi exam (1-6). Levels 5 and 6 are advanced; levels 1-2 are elementary.



- **New! Source**: Identify source for Auto-translation
- **ColorTones™**: Shows Chinese characters in colors that correspond to the five tones in Mandarin.
- **New! Traditional first**: Prioritize Traditional Chinese
- **Enhanced Zoom**: Slide right to enlarge characters. Ideal for viewing details of characters and for larger groups of students.

Speech

- **New! AutoPronounce™:** Immediately pronounces the Chinese word in LiveScan. In HighlightScan, the word is pronounced when the mouse hovers over the word.
- **New! Voice:** Choose from Microsoft Simplified Chinese (default), Microsoft Lili (Windows 7/Vista Ultimate) and other SAPI text-to-speech voices. Bing voices require an Internet connection.
- **New! Add Voices:** Buy premium Chinese voices for faster, offline operation.
- **New! Rate:** Move slider left to slow down the pronunciation of words in Chinese.



Loqu8 iCE 6 includes Microsoft Simplified Chinese voice. Selected Bing voices are included with Standard and Professional editions. Microsoft Server HuiHui and HanHan are from the optional Premium Voice pack. Windows 7/Vista Ultimate Edition users may also choose Microsoft Lili.

Multi-Language Extensions™ (MLX)

- **New!** Choice of auto-translations from Microsoft Bing, Google Translator or both.
- Languages: Arabic, Bulgarian, Catalan, Czech, Danish, Dutch, English, Estonian, Finnish, French, German, Greek, Haitian Creole, Hungarian, Indonesian, Italian, Japanese, Korean, Latvian, Lithuanian, Norwegian, Polish, Portuguese, Romanian, Russian, Slovak, Slovenian, Spanish, Swedish, Thai, Turkish, Ukrainian and Vietnamese.

Note: MLX uses third-party services and the web. Google Translate is an optional service.

Copy+/Export

iCE 6 can now generate *customized study lists*—in seconds.

From *LiveScan*, *HighlightScan* or *Main* windows, right-click on an entry and choose **Copy+** or **Export**. iCE generates a formatted table that's ready to be viewed, edited or printed in Microsoft Word or Excel.

- **New! Rubify™:** When enabled, adds a formatted row of Pinyin and Chinese (“rubytext”). For TXT, Unicode TXT (Tab), CSV and HTML formats only.
- **New! Table:** When enabled, creates a formatted table with Simplified, Traditional, Pinyin, Bopomofo and English entries for each word in the LiveScan, HighlightScan and Main windows. Not supported in RTF, CEDICT and ZDT export formats.

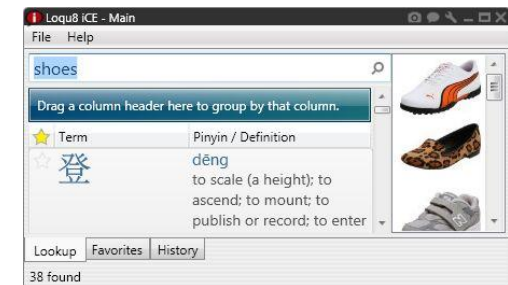
Options

Extend your learning experience with these Loqu8 iCE feature packs:

Google Translate integrates Google’s advanced translation service into Loqu8 iCE. One year of service, including one million credits, is \$30 USD. Each credit corresponds to a single character of Chinese, punctuation or symbol.

Premium Voices lets you use Chinese text-speech voices everywhere. Unlike Bing voices that rely on your web connections, Microsoft Server HuiHui and HanHan premium voices work directly from your system through Microsoft Speech Server (included). Since no internet connection is required, some users will experience faster response times for Pronounce and AutoPronounce.

Services



iCE now offers specialized links to popular web services.

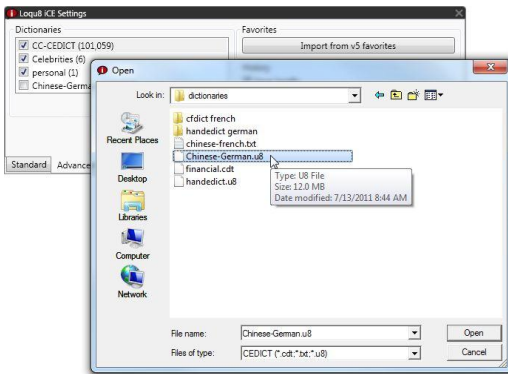
- **Amazon:** In the Lookup, enabling this service shows images from Amazon.com.
- **Facebook:** Share the words you’re learning with your friends. Click the Facebook icon on the toolbar in the LiveScan window.

Dictionaries

Enhanced! iCE's custom dictionaries can now support 200,000 entries—enough for an entire language (e.g., Chinese-German or Chinese-French). For the first time, show multiple translation dictionaries (e.g. Chinese-German) at the same time in popups and lists.

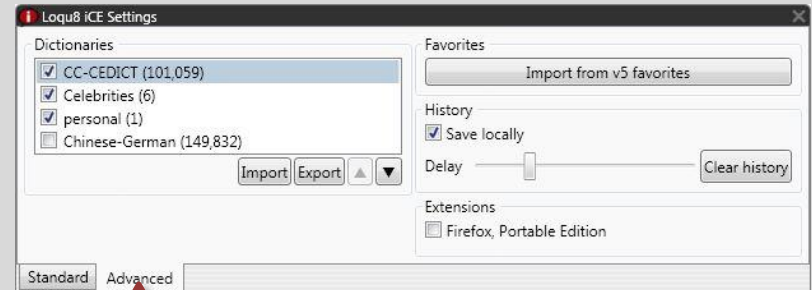
When adding a new entry, enable auto-translations from Bing and Google Translate.

- Uncheck a dictionary to hide its entries in all iCE windows and lists. The total number of valid entries is shown in parentheses. To delete a dictionary from the list, right-click and choose Delete. The CC-CEDICT dictionary cannot be deleted
- **Enhanced! Import:** iCE will import CEDICT dictionary (CDT, TXT, U8) and ZDT flashcard (ZDT, TXT, U8) formatted files.



- **Export:** iCE will export dictionaries in CEDICT dictionary (CDT) and ZDT flashcard formats. Download from <http://zdt.sourceforge.net/>
- **New! Up/Down:** Prioritize the entries from each dictionary by clicking the up and down arrows

The **Advanced Settings** tab is available with Loqu8 iCE Professional edition.



Favorites

New! Upgrading from Loqu8 iCE 5?

After installing iCE 6, click **Import from v5 favorites**. In a few moments, your favorite words will be added to the Favorites list.

Extensions

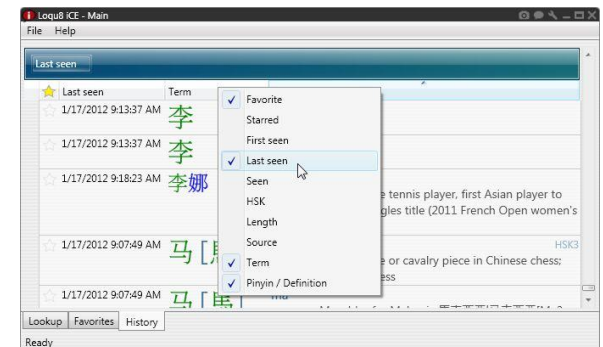
- **New! Firefox, Portable Edition:** If you're running Firefox from your USB flash drive, check the box and bring Loqu8 iCE with you, too.



Download Mozilla Firefox, **Portable Edition** from http://portableapps.com/apps/internet/firefox_portable

History

- **New! Word tracking:** iCE tallies and timestamps every view (after a pre-set delay) and interaction (copy, pronounce, etc.). *Seen* is the field name that keeps this tally. First seen and Last seen are the timestamps. These may be displayed in any list (Lookup, Favorites, History). Un-check to disable tracking
- **New! Delay:** The time interval (in seconds) before a word is considered "viewed" by you. This is the same delay before Auto-Pronounce speaks the word(s).
- **New! Clear History:** Erases the logs tracking your activities



Right-click on a column header to enable or disable fields, including *Seen*, *Last Seen* and *First Seen*.