

LiveScan™



杨钰莹与毛宁湖南春晚 深情对唱

**深情**  
shēn qíng HSK6  
deep emotion; deep feeling; deep love

Here's the **most popular feature** of iCE. Hover your mouse over a Chinese word and you'll immediately see a popup window reading the Chinese word(s) while showing you the English meaning and how to pronounce it (Pinyin or Bopomofo).

**New!** The *HSK level* number helps you identify common words used in the Chinese proficiency exam. Tag your favorite words by clicking on the star. When ColorTones™ enabled, Chinese is shown in *colors* corresponding to each of the Mandarin tones.

ma1 ma2 ma3 ma4 ma5  
**妈麻马骂吗**



坐飞机怎样远离感冒?

Loqu8 iCE

**坐飞机**  
zuò fēi jī  
to catch a plane

Pinyin Meaning

Chinese

Favorites

HighlightScan™

Loqu8 iCE - Highlight

一些 投资 顾问 在 将 自身 产品的 回报率 与 标普 500 进行比较 时 会 大获全胜 , 因为 这 其中 暗藏 着 某种 个人理财 》 跑赢市场的 “玄机” 大获全胜 dà huò quán shèng to seize total victory (idiom); an overwhelming victory; to win by a landslide (in election)

To understand a **range of text**, highlight the Chinese text and iCE opens up a HighlightScan window. An auto-translation provides a simplistic translation. Hover your mouse over words in the reading panel to see Loqu8's dictionary-based meanings.



Toolbar

Loqu8 iCE - Highlight

The most detailed experience of Beijing-Shanghai high-speed railway

最 详细 的 京沪 高铁 体验

京沪 高铁 [-滬-鐵]

jīng hù gāo tiě  
Beijing and Shanghai express rail link (projected); abbr. for 京滬高速鐵路|京沪高速铁路

Auto-translation

Reading panel

Favorites

Detail panel

Lists

Loqu8 iCE

File Help

Lookup box: hello

Term	Definition
喂	wèi hello (interj., esp. on telephone); hey; to feed (sb or some animal)
你好	nǐ hǎo Hello; Hi; How are you?
问好 [問-]	wèn hǎo to say hello to; to send one's regards to
午安	wǔ ān Good afternoon; Hello (daytime)

Select list

Lookup Favorites History

Select a list from the main window by clicking a tab:

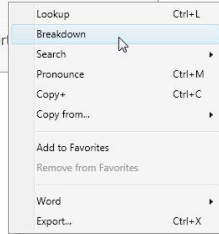
**Enhanced! Lookup:** Access the Loqu8 Chinese-English dictionary offline—when your Internet connection is slow or unavailable. Type (or paste) a word in English, Chinese or Pinyin. iCE will lookup and display all entries matching your request. Wildcard (AND, OR, NOT) expressions are supported.

**New!** When you highlight a range of Chinese text with HighlightScan, you'll automatically see those words added to this view. This makes it easy for you to interact with any entry by right-clicking and choosing from the menu. Click the star to mark each word as your favorite.

**Favorites:** Any Chinese word you view with iCE may be tagged for future or review. Click on the Favorites tab to display all the words you have tagged. Un-star any word to remove it from your list of favorites.

**New! History:** Did you forget a word you just saw—even if it was a few days ago? iCE's new word tracking feature lists the words you've recently viewed.

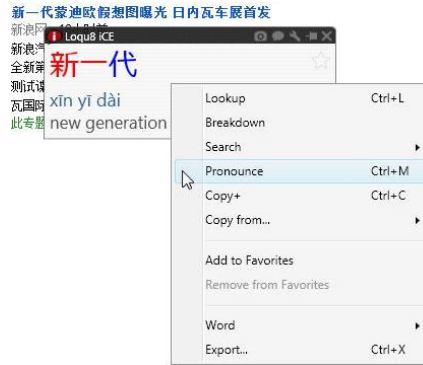
## Right-Click Actions



Right-click your mouse to access search, pronounce, copy and export actions.

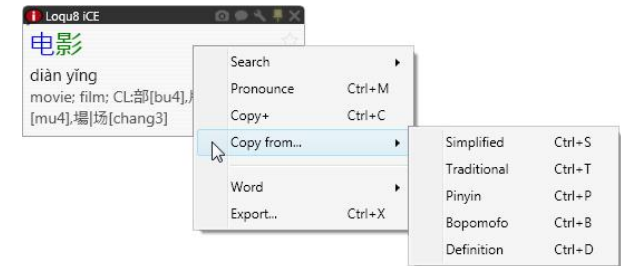
## Pronounce

Right-click and choose **Pronounce**. Hear the selected word(s) pronounced in Mandarin Chinese. To choose a different voice, see Settings > Speech.



To hear all the words read aloud in Chinese, select all (Ctrl+A) and then choose Pronounce (Ctrl+M).

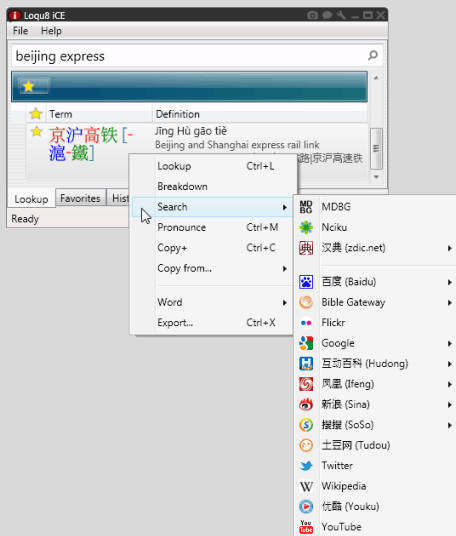
## Copy



**New! Copy+:** Copies and formats the entire entry (Chinese, Pinyin, English). Paste into Microsoft Word, Excel, et al.

**New! Copy from:** Copies just the Chinese (simplified, traditional), Pinyin, Bopomofo or English definition.

## Search



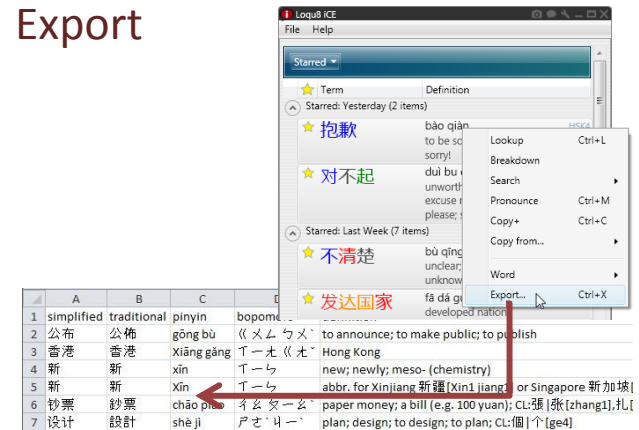
One of the best ways to understand Chinese (or any other language) is to see, read and hear contemporary examples of the way words and phrases are being used.

Loqu8 iCE lets you search in Chinese **without typing Chinese** (or copy+paste). Just right-click and choose Search.

Online resources are just a click away. Choose from MDBG, Baidu, Google, Twitter, Wikipedia and YouTube.

Once you're on a Chinese website, let iCE help you understand the Chinese text with *LiveScan* and *HighlightScan*.

## Export



**New! Export:** Save the selected entries into a formatted word list (Chinese, Pinyin, Bopomofo, English) that can be edited with Microsoft Word, Excel, et al.

Supported export formats include: Text (tab delimited), Unicode, CSV, Rich Text Format, Web page, CEDICT and ZDT.

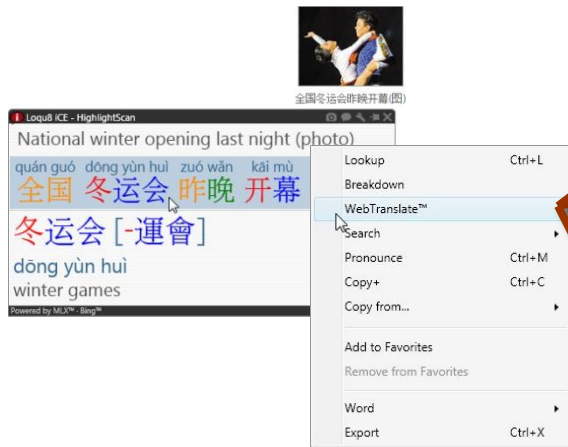
## Translations

iCE normally displays meanings from its built-in Loqu8 Chinese-English dictionary. iCE 6 now provides machine-based, auto-translations:

- **Multi-language extensions (MLX)** integrates the auto-translations into the HighlightScan window from Google or Microsoft Bing. Google is now charging a fee for using their translation API service. Definitions may also be translated from English to another language.

- **WebTranslate** displays three translations on a single web page. There is no charge for using these services (at this time).

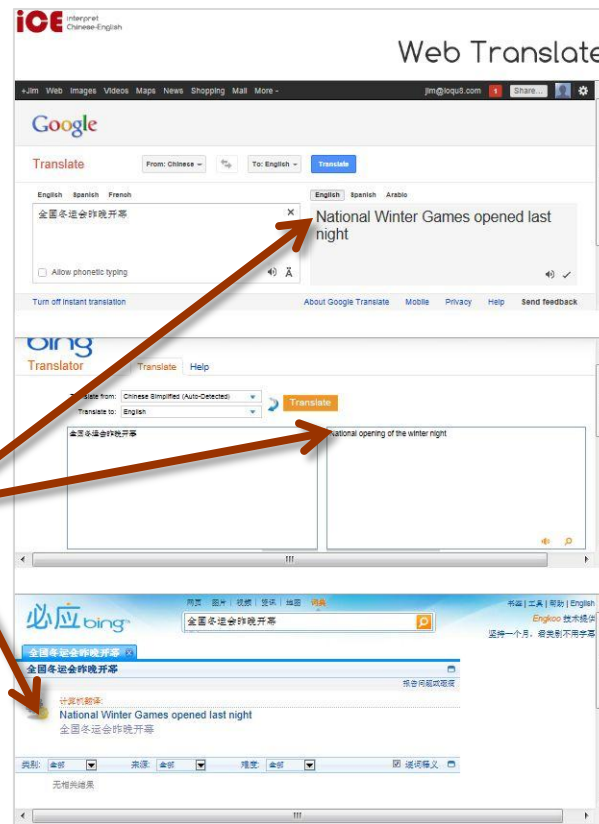
Auto-translations are frequently inaccurate when used in isolation. When used with the iCE's dictionary-based definitions, it's easy to see the true meaning of the words when combined with both word-based dictionary and auto-translation technologies.



From the HighlightScan window, choose WebTranslate to quickly display three translations in one web page.



**MLX** auto-translates the selected Chinese text and displays it in the HighlightScan window's top panel. In this example, auto-translations are provided by Bing [A] and Google [B].



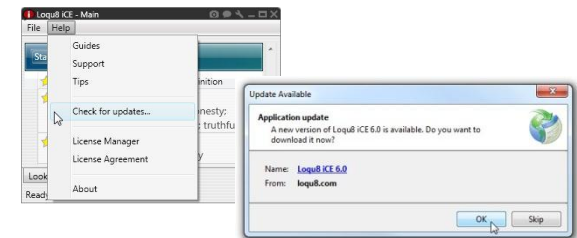
## Toolbar



The toolbar at the top of each window provides quick access to common functions:

- **iCE:** Enable or disable LiveScan and HighlightScan. Right-click for options.
- **LiveScan/HighlightScan:** Toggle to enable or disable. Right-click to see options.
- **New! Screenshot:** Save a screen image of the Main, LiveScan or HighlightScan window.
- **New! Feedback:** Share your feedback on a feature, bug or a suggestion with the Loqu8 team.
- **New! Settings:** Customize iCE the way you want to use the program.
- **Minimize/Maximize:** Hide or expand this window.
- **Close:** Close this window. On the main window, this exits the program.

## Update



iCE provides free updates for our loyal customers. Minor enhancements and bug fixes are free. When you see this message after starting iCE, click **OK** to install.

- **Subscriptions:** Includes all minor updates and major program upgrades for valid subscribers.
- **Perpetual Licenses:** There may be an upgrade charge for major updates (e.g., version 6 to 7).